



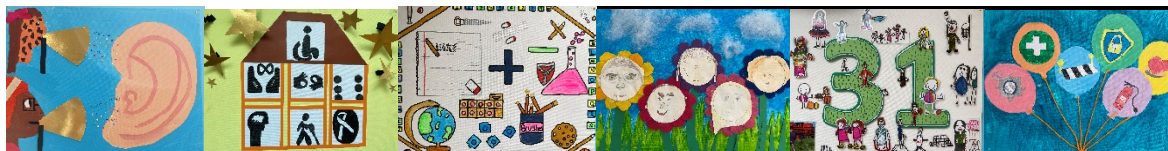
Brede Bulletin

27th September 2024
Responsibility Inquisitiveness Confidence Inspiration Respect

Dear Parents and Carers. The children have been exploring what we mean by 'peace' this week. They've explored the various symbols of peace and the barriers to achieving peace in their lives and globally. The children also learnt about the Christmas football match that has gone down in history as a symbol of peace during WW1. It perfectly complemented our Right of the week – The Right to be safe. It was also lovely to meet some of the new members of the PTFA yesterday. Lots of ideas for new and tried and tested events were shared. See their flyers below for more information. Have a lovely weekend, everyone. Julie Knock

Our School Charter

Each week we work as a team to demonstrate our responsibility and commitment to ensuring everyone at Brede Primary School has ...


**The Right
to be heard**
**The Right
to be
included**
**The Right
to learn**
**The Right
to be me**
**The Right
to play**
**The Right
to be safe**

This week's Right was the Right to be safe

... and look who was invited to #hotchocolatefriyay! for going over and above this week:


Hedgehogs

**Blake H
Mercia**
Rabbits

Janson
Foxes

**Ren
Darcey**
Owls

**Jacob
Jerson
Frankie
Reggie C**


Harvest Festival – Thursday 3rd October

The school is sending all of our Harvest donations to Hastings Food Bank this year. Team members from the food bank will come into school on Thursday next week to talk to the children and collect food donations. If you would like to contribute, please send your donations of non-perishable foods and toiletries into school by the morning of Thursday, October 3rd, when they will be collected.



Goals Galore!

Congratulations to our Brede footballers this week, who participated in the Robertsbridge Sports Cluster Tournament this afternoon. Jacob, Jimmy, Jasper, Oliver, Tommy F, Cael, Vinnie, Rocky, and Luca were a credit to the school and had great fun.



PE Kit in School

Please can we remind parents that children must have a PE kit in school every day. Children must have available a t-shirt, shorts and suitable footwear stored in a drawstring bag on their coat-peg every day. If you are having any difficulty providing this, please contact the main school office.

Is your child entitled to free school meals?

Children in Year 3 and above may get free school meals if their parents or carers get any of these benefits:

- [Universal Credit - GOV.UK](#) (with an annual household income below £7,400 after tax, not including other benefits).
- [Income Support - GOV.UK](#)
- [Income-based Jobseeker's Allowance \(JSA\) - GOV.UK](#)
- [Income-based Employment and Support Allowance \(ESA\) - GOV.UK](#)
- [Support under Part VI of the Immigration and Asylum Act 1999 - GOV.UK](#)
- [The Guaranteed element of State Pension Credit - GOV.UK](#)
- [Child Tax Credit - GOV.UK](#) (with an annual household income less than £16,190).
- [Working Tax Credit run-on](#) (paid for 4 weeks after you stop qualifying for Working Tax Credit). Anyone who gets Working Tax Credit itself, won't get free school meals.

**Free
School
Meals** 
Are you entitled?

Find out more [here](#).

PTFA - Save the Dates!

The PTFA will be hosting its annual Halloween disco on Thursday, October 24th. The disco is for children in Rabbits, Foxes, and Owls classes only. Hedgehog class will have its own spooktacular event—further information will fly your way soon.



Brede Primary School

Entry fee : £3
includes snack, drink and a gift

Dress up welcomed but not compulsory

Prize for best dressed



Please join us for Brede's Primary School

PTA MEETING

FRIDAY, OCTOBER 4TH

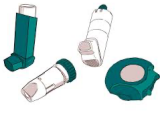



Welcome to the new PTA for
2024-2025

14:30PM

EVERYONE IS WELCOME!

If you would like to join the PTA full or part time please let the school know or come along

We are excited to see you there!

	<p>Important notice: Asthma and Inhalers</p> <p>If your child is administered their inhaler during the night or the morning before coming to school, please remember to let us know the time and dose at drop-off by emailing or telephoning the school office. This ensures we are abiding by the prescribed dosage at all times.</p>
	<p>The East Sussex Parenting Team</p> <p>As a parent, we know sometimes you may need a helping hand, advice, or practical tips. And let's face it, parenting during a pandemic has been especially challenging. That's where the East Sussex Parenting Team comes in. We offer tried, tested, and internationally recognised parenting programmes, ensuring you and your children receive the support you need. We all have very busy lives and different needs, so the service is not a "one size fits all" but a selection of various programmes you can choose from. Find out more here.</p>
	<p>Keeping Children Safe online.</p> <p>We teach online safety to all year groups at school with the aim of protecting children when using digital technologies. Below are some helpful websites that parents can use to get further information about how they can support their children at home.</p> <p>Thinkuknow Keeping Children Safe Online - CBeebies Internetmatters – get smart about smartphones Childnet Online Safety Guidance for Parents Young People and Screen Time – A Good Start SWGFL: The TikTok Checklist SWGFL: The Snapchat Checklist SWGFL: The Roblox Checklist SWGFL: The Netflix Checklist SWGFL: The Instagram Checklist SWGFL: The Yubo Checklist Password Management and Security SWGFL: Online Safety Podcast</p>
	<p>Family Hub East Sussex. Find out more here.</p> <div data-bbox="762 1406 949 1668"> <p>Juggling family life...?</p>  <p>...we're here to help.</p> <p>Every family goes through ups and downs. Let us help you to find the answers.</p> <p>We can offer you a wide range of support with:</p> <ul style="list-style-type: none"> • emotional wellbeing • special educational needs and disabilities • financial, housing or employment challenges • supporting your child's behaviour • support for new parents • activities for children of all ages <p>01323 46 46 55 familyhub@eastsussex.gov.uk</p> <p>FAMILY HUB STARTALIFE</p> </div>



Childcare Sufficiency Parental Survey.

East Sussex County Council is attempting to secure enough childcare places, as reasonably practicable, for parents and carers working, studying, or training for employment. Feedback from parents and carers will help them form their 2025 Childcare Sufficiency Duty Report. The survey can be completed by clicking the link below. Responses must be submitted by 7 October.

<https://consultation.eastsussex.gov.uk/childrens-services/copy-of-childcare-sufficiency-duty-parental-survey>



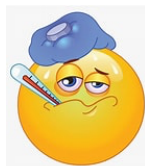
Have Your Details Changed?

This is a reminder to all parents/guardians to notify the school office of any changes, such as medical conditions, home addresses, contacts, and permissions you wish to reconsider, e.g., use of your child's photo.



Parking Outside School at Drop Off and Pick Up

The road outside of Brede Primary can get very busy during drop-off and pick-up times, and it is essential that parents and visitors park safely. Please do not park on the yellow zig-zag lines or across our neighbour's driveways. The yellow zig-zag lines are a no-stopping zone during the following times:




As illnesses continue to circulate, NHS England has published advice on its website. It lists all the most common childhood illnesses and provides advice regarding attendance at school, including when to contact your GP.

[NHS England: Is my child too ill for school?](#)



Diary Dates

Dates	What	Who
Thursday 3/10/24	Harvest Festival – collection of non-perishable foods for the Hastings Foodbank, please.	Whole School
DATE CHANGE Friday 04/10/2024	Scooter Experience	Rabbits & Foxes
Week beginning: 21/10/24	After school parent consultations – more information to come.	Whole School
Tuesday 22/10/24	Glyndebourne: performances for schools visit	Year 5 & 6
Week beginning 28/10/24	Half Term	Whole School
Thursday 24/10/2024	Individual School Photos	Whole School
Monday	Flu vaccination	Whole School

	09/12/2024		
	Wednesday 11/12/24	Christmas Fair– more information to come.	Whole School
	17/12/24	Nativity Concert– more information to come.	Hedgehog and Rabbit classes
	18/12/24	Christmas Dinner	Whole School
	19/12/24	Christmas parties	Whole School
	INSET DAYS 2024/2025	24th February 2025 21st July 2025 22nd July 2025	Whole School
	Safeguarding If you have any concerns regarding safeguarding, please speak to any of the staff below: <ul style="list-style-type: none">• Mrs Burrows – Designated Safeguarding Lead• Mrs Bulgin, Mrs Knock/Miss Nugent - Deputy DSLs		