

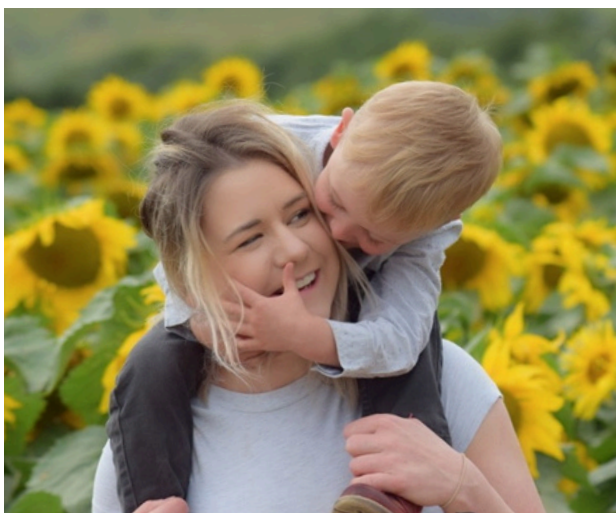
## More about ND Family Support

NHS Sussex commission Amaze to coordinate this service for local parent carers. It complements other ND services and support across health, education and social care in both regions.

We work closely with East Sussex Parent Carer Forum and Brighton & Hove Parent Carers' Council, local organisations that gather the views and experiences of parent carers to help improve services. Our work with the forums helps ensure ND Family Support meets your needs.

For more about East Sussex Parent Carer Forum, visit: <https://www.espcf.org.uk>

For more about the Brighton & Hove Parent Carers Council, visit: <https://paccbrighton.org.uk>



## How to get support

You can refer yourself or ask a professional that works with your family to refer you via the forms on the ND Family Support page of our website. Click on this link or the QR code below.

[amazesussex.org.uk/nd-family-support](https://amazesussex.org.uk/nd-family-support)

Or to find out more contact:

**ND Family Support Service**

NDP@amazesussex.org.uk

0800 088 6013



For all other Amaze services, contact:

**SENDIASS advice line:**

sendiass@amazesussex.org.uk

01273 772289

Open Mon to Fri, 9am to 5pm



AmazeinSussex



AmazeSussex



amazesussex



Registered charity no: 1078094, Company limited by guarantee,  
registered in England and Wales, No 3818021



## ND Family Support Service



Advice, training and groups for families with neurodivergent children and young people

**in East Sussex and Brighton & Hove**

## What is ND Family Support?

Amaze ND Family Support is a service for families in East Sussex and Brighton & Hove who have children and young people under 25, pre- and post-assessment, for neurodevelopmental (ND) differences that include:

- autism
- ADHD
- tics/Tourette syndrome
- learning disabilities/developmental delay
- FASD (foetal alcohol spectrum disorder)
- social communication differences
- sensory processing

ND Family Support offers training and navigation, support groups and befriending for parents, and support and activities for young people via Amazing Futures.

### What is ND?

The ND in our name stands for **neurodevelopmental**, as we support families at any point on the neurodevelopmental pathway; before, during and after assessment and diagnosis for a neurodevelopmental condition.

ND is also short for:

- **neurodivergent** - a way of describing people whose brains work differently in one or more ways from what is considered standard or typical (neurotypical)
- **neurodiversity** - the idea that everyone thinks and processes the world differently and all perspectives deserve to be seen, valued and treated equally

## How do we support you?

### Family Training & Navigation

We give you information and advice about neurodevelopmental differences, how the local pathways work and how to support your neuro-divergent child. We give advice via telephone navigation calls, workshops and courses.

Visit: [amazesussex.org.uk/nd-family-support/](https://amazesussex.org.uk/nd-family-support/)

### Parent groups and befriending

We run regular, informal support groups across East Sussex and Brighton & Hove, in partnership with the local parent carer forums, where you can meet other parent carers with children and young people on the neurodevelopmental pathway.

Visit: [amazesussex.org.uk/parent-groups-and-befriending/](https://amazesussex.org.uk/parent-groups-and-befriending/)

### Social and activity groups for 14-25s

Young people aged 14 to 25 with special educational needs and disabilities can join our Amazing Futures peer support and activity groups in Brighton & Hove, Bexhill and Eastbourne. Visit:

[amazesussex.org.uk/young-peoples-groups](https://amazesussex.org.uk/young-peoples-groups)



## Who can use the service?

ND Family Support is for any East Sussex or Brighton & Hove parent carer with a child or young person under 25, at any stage on the neurodevelopmental pathway, from looking into getting a referral for assessment to post diagnosis/assessment.

Your child does **not** need to have a diagnosis to get support.

## Other Amaze services

### SEND Information, Advice and Support Service (SENDIASS)

Online information, regular free workshops and an advice line for one to one SEND advice.

### DLA and PIP Advice Service

Resources and sometimes practical support with making a claim for DLA or PIP.

Visit <https://amazesussex.org.uk/services> to find out more about all our services.